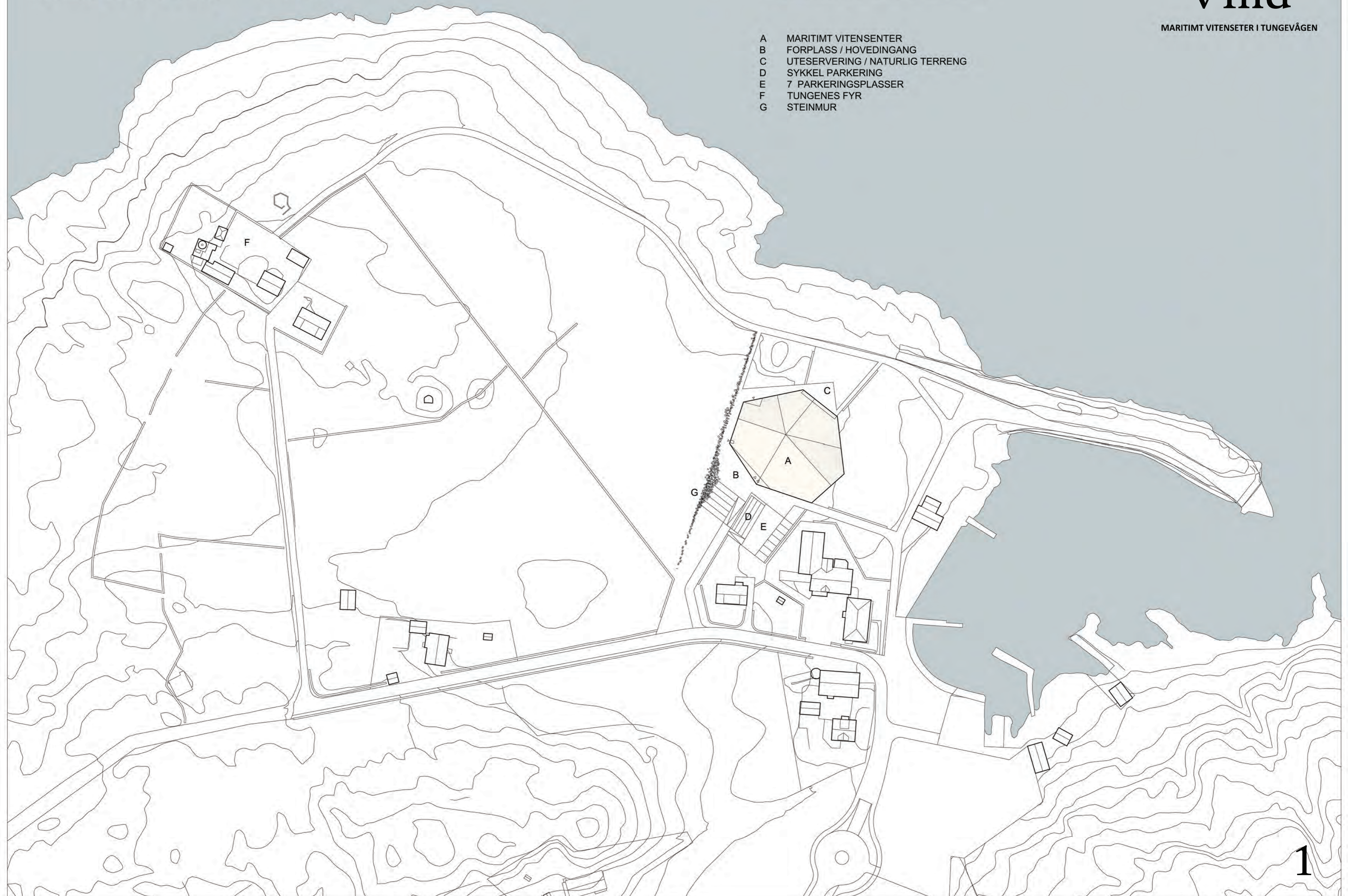
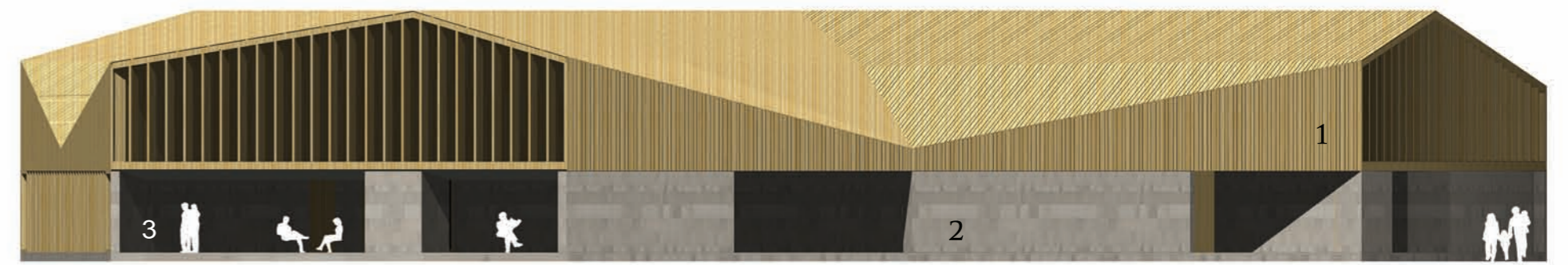
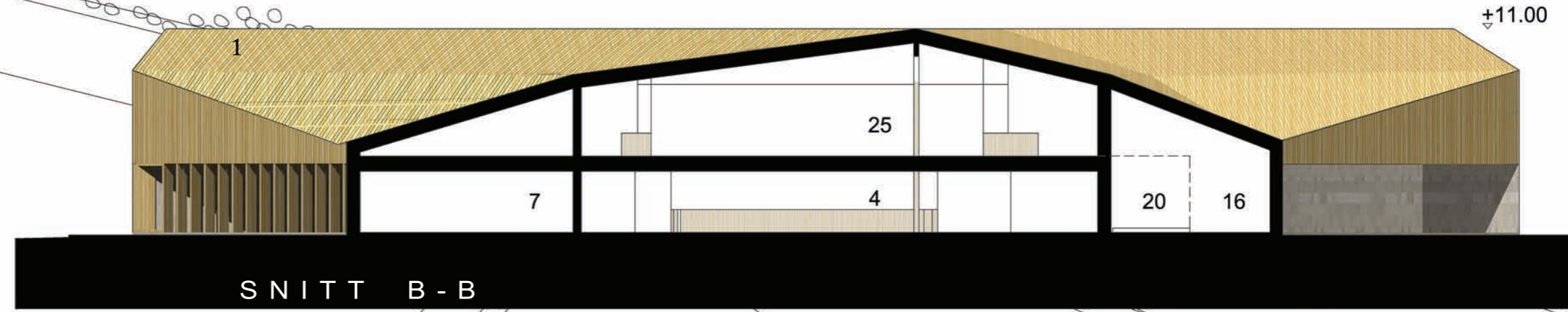




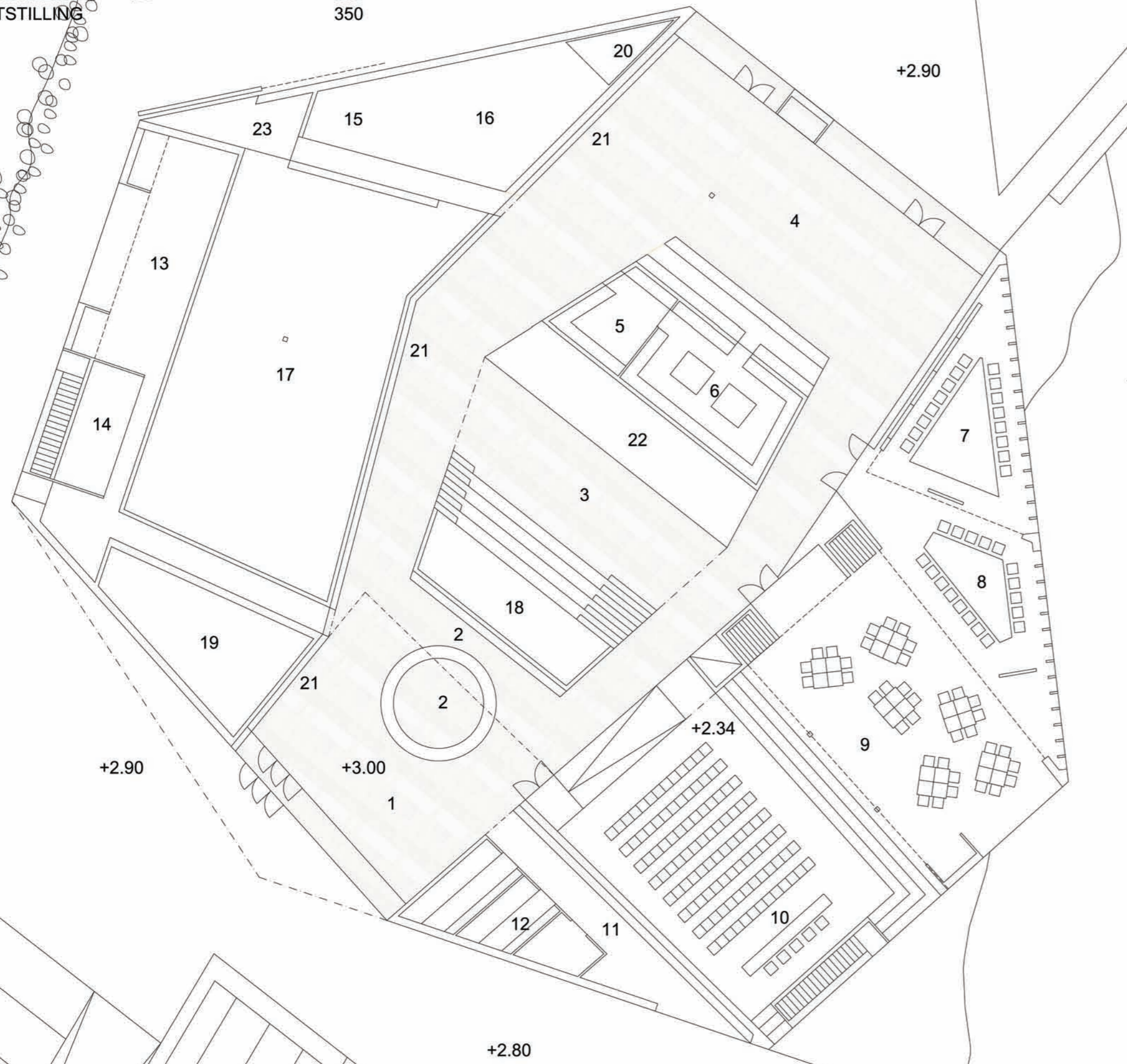
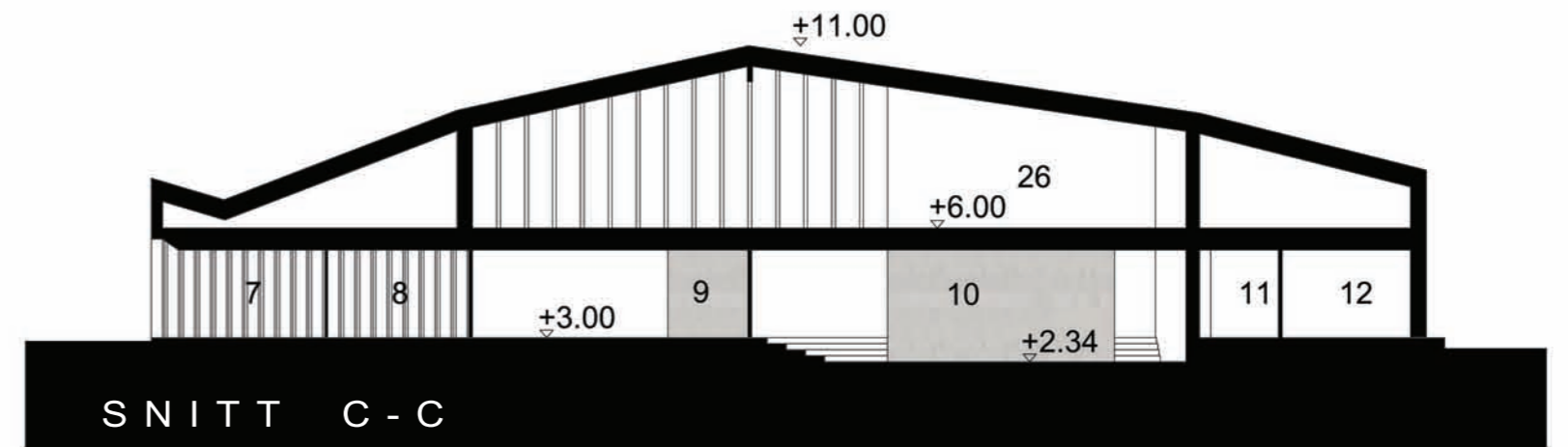
- A MARITIMT VITENSETER
- B FORPLASS / HOVEDINGANG
- C UTESERVERING / NATURLIG TERRENG
- D SYKKEL PARKERING
- E 7 PARKERINGSPLASSER
- F TUNGENES FYR
- G STEINMUR



- 1 VESTIBYLE 75
- 2 BUTIK, RESEPSJON 50
- 3 ATRIET (UTSTILLING, AKVARIUM) 165
- 4 KAFÉ 200
- 5 KJØLEROM 20
- 6 KJØKKEN 60
- 7 GRUPPEROM 50
- 8 MØTEROM 55
- 9 UNDERVISNINGSRUM 100
- 10 AUDITORIUM 200
- 11 GARDEROBE 40
- 12 TOALET 35
- 13 KONTOR, PERSONAL 60
- 14 GARDEROBE, PERSONAL 30
- 15 VASKEROM 25
- 16 VERKSTED 50
- 17 GJENSTANDSMOTTAG, LAGER 200
- 18 UNDERVISNINGSMATERIELL 30
- 19 TEKNISK ROM 45
- 20 VAREHEISS 360
- 21 UTSTILLING VITRINE 315
- 22 AKVARIUM 350
- 23 INNLASTNINGSOMRODE
- 24 UTSTILLING
- 25 UTSTILLING
- 26 UTSTILLING



- 1 MALMFURU
- 2 GRAPHIC CONCRETE
- 3 GLASS



1:200

# Vind

MARITIMT VITENSETER I TUNGEVÅGEN

1	VESTIBYLE	75
2	BUTIK, RESEPSJON	50
3	ATRIET (UTSTILLING, AKVARIUM)	165
4	KAFÉ	200
5	KJØLEROM	20
6	KJØKKEN	60
7	GRUPPEROM	50
8	MØTEROM	55
9	UNDERVISNINGSRUM	100
10	AUDITORIUM	200
11	GARDEROBE	40
12	TOALET	35
13	KONTOR, PERSONAL	60
14	GARDEROBE, PERSONAL	30
15	VASKEROM	25
16	VERKSTED	50
17	GJENSTANDSMOTTAG, LAGER	200
18	UNDERVISNINGSMATERIELL	30
19	TEKNISK ROM	45
20	VAREHEISS	
21	UTSTILLING VITRINE	
22	AKVARIUM	
23	INNLASTNINGSOMRODE	
24	UTSTILLING	360
25	UTSTILLING	315
26	UTSTILLING	350

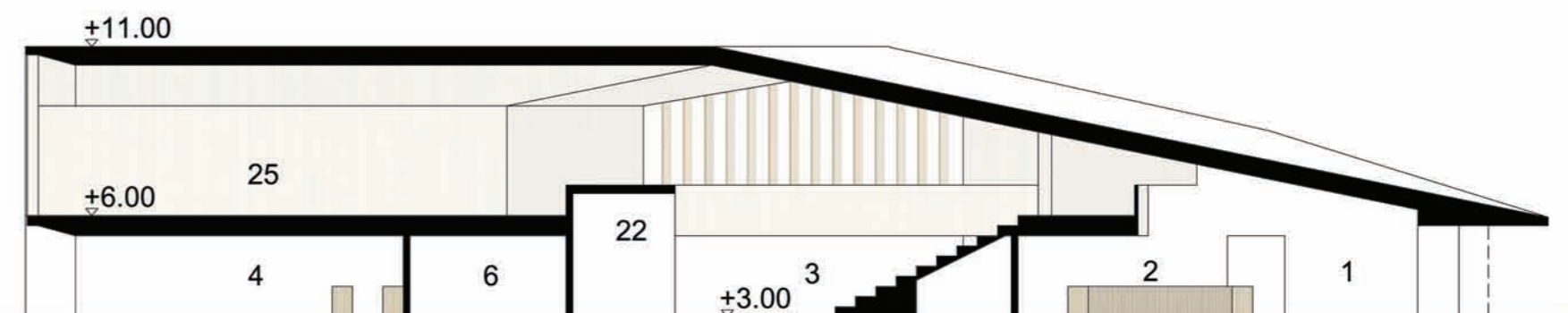
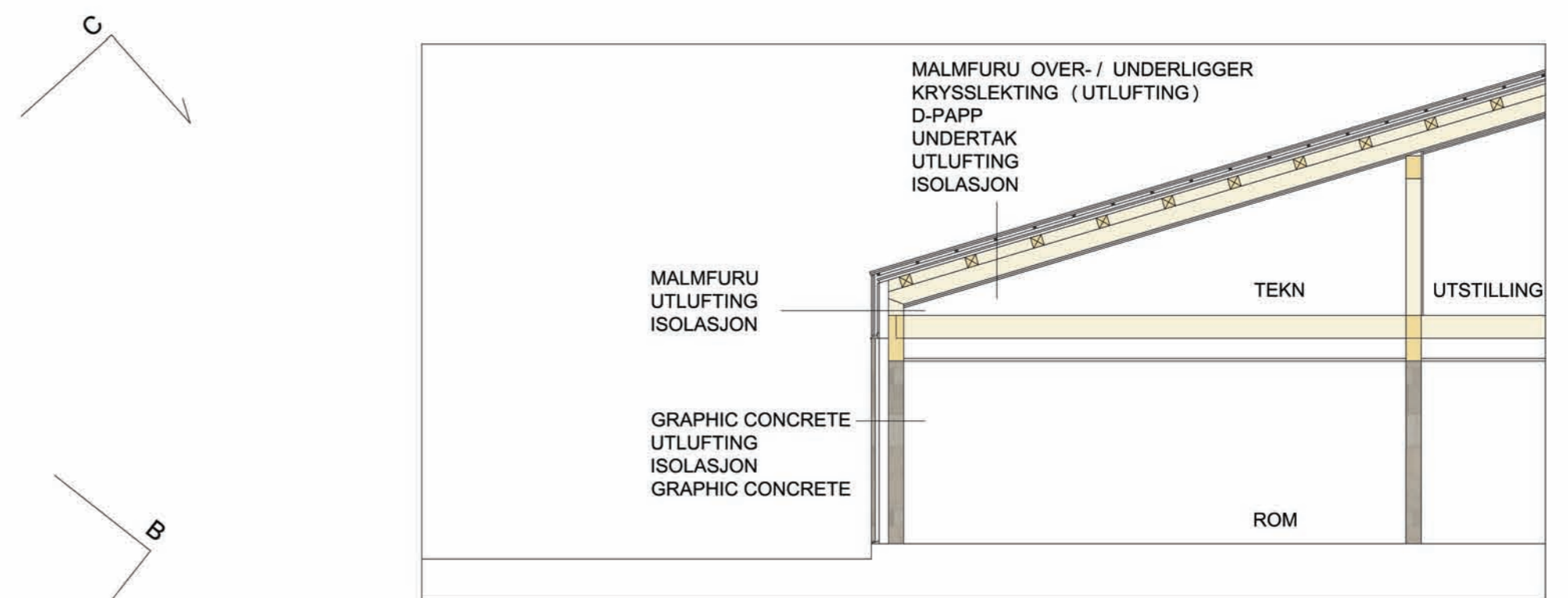
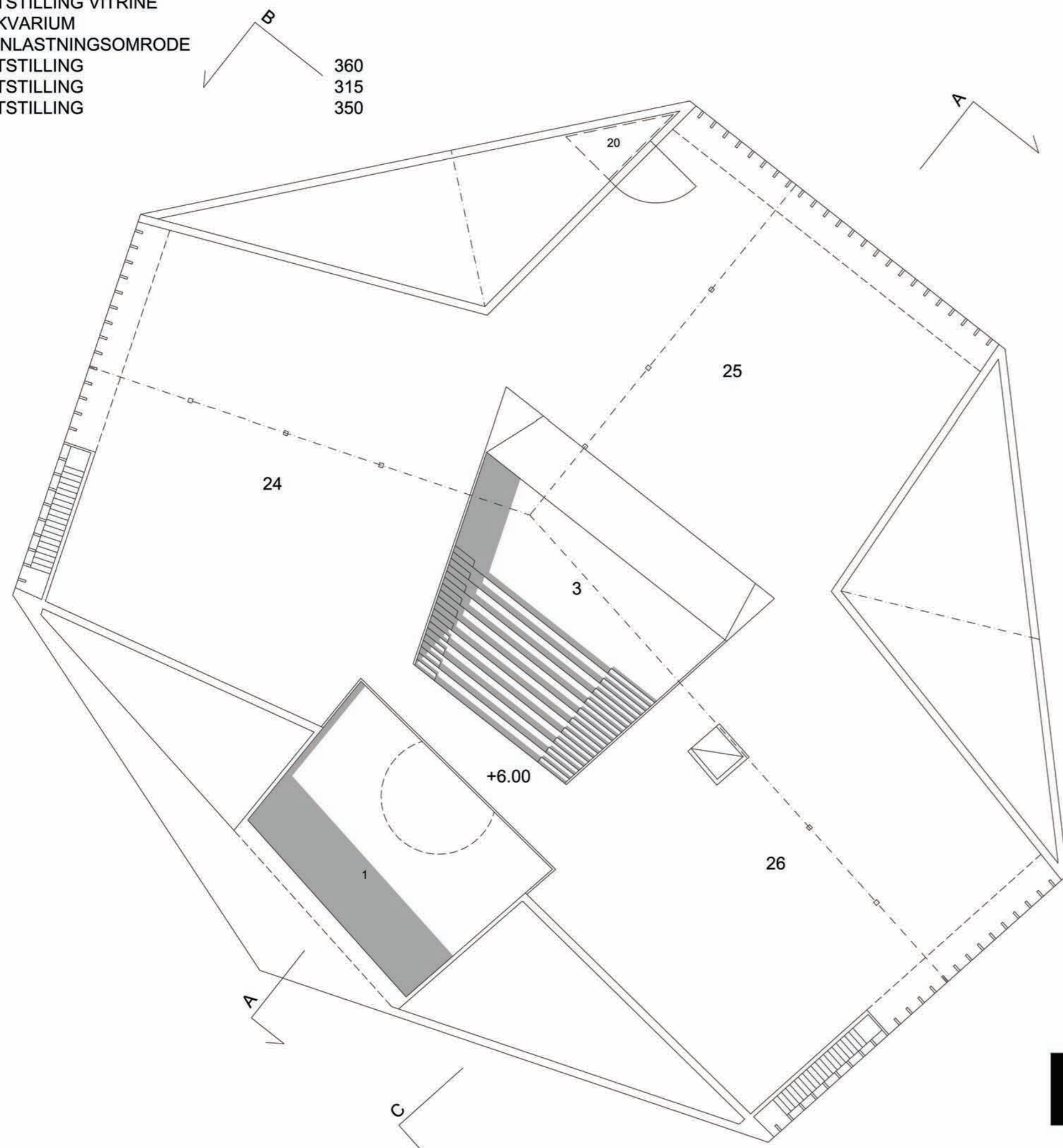


- 1 MALMFURU
- 2 GRAPHIC CONCRETE
- 3 GLASS

FASADE MOT SYD



FASADE MOT VEST

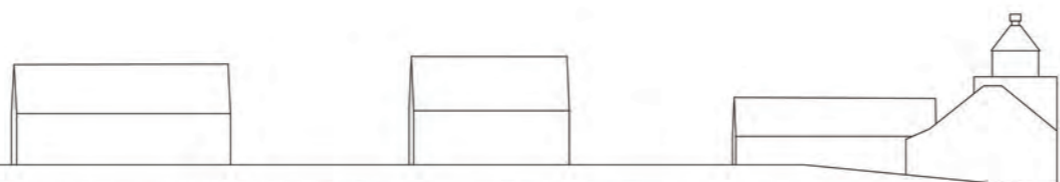


SNITT A - A

ETASJE 2

1:200





## MARITIMT VITENSETER I TUNGEVÅGEN

The external shape of the entry is compact and simple. The simple formed architecture is unique and delicate, and the dialogue between the building and the environment is influential. In the proposal the sculptural building becomes a natural part of the environment; the closeness with the village buildings gives the entry enough space to the seaside and the lighthouse. The visual contact with the sea is very important - both the open sight and the connection with the bay. Ground floor made of graphic concrete gives the entry stability and all the upper parts are made of woods. The form language and the material choices support each other. In the proposal the interior and exterior are in dialogue.

The way to the entrance is easily found. The entrance lobby and the atrium form a well-functioning spatial totality. The aquarium part of the atrium is well placed and gathers the visitors easily in the both floors. The spatial dramaturgy is simply but carefully considered. The restaurant-café is situated in the best possible way, opening up with its external terraces towards the sea views, and it can also operate when the exhibition spaces are closed. The maintenance on the lighthouse side of the building does not disturb the visitors. The open staircase gives the visitor a sight over the entrance before entering the exhibition spaces. The three spaces have their own character with the connection of the lighthouse, seaside and harbor bay. The exhibition circulation route is simple.

The ground floor has a massive concrete structure. The wooden structure in the exhibition level gives the interior its character. The compact form of building makes it energy efficient.

### m2 BRA - bruksareal

Bygget	1 750
Parkeringsplasser	
Parkeringsplasser for sykkel	1 250
Gang- og sykkelveg	
Terreng	
	<b>3 000 m2 BRA</b>

m3 - volum 10 950 m3

˘ Vind ˘

